

IMMOBILE CORONALE N.5

VIA PIETRALATA

17,70

B

14

superficie mq. 30,20

superficie mq. 24,50

superficie mq. 17,80

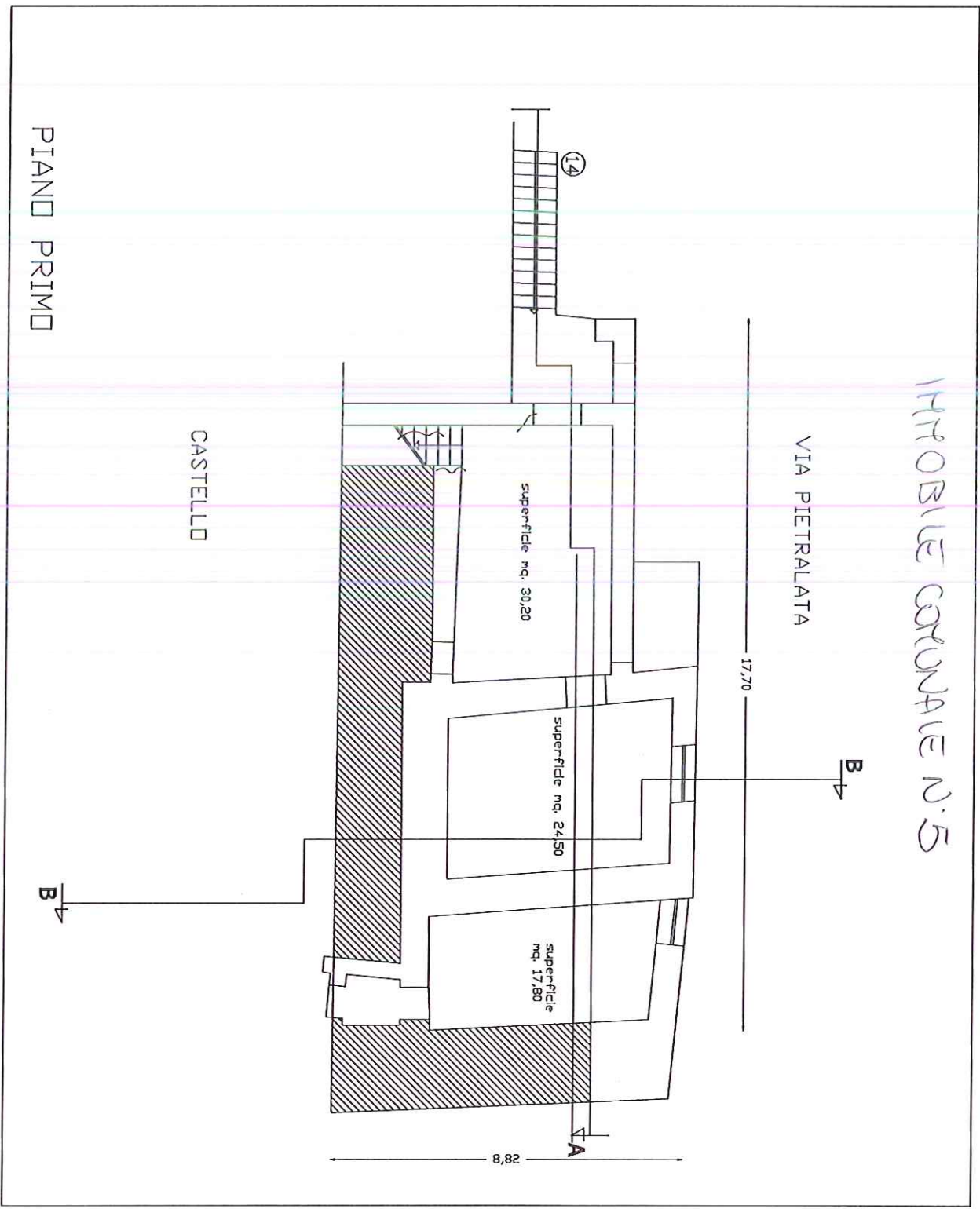
8,82

A

CASTELLO

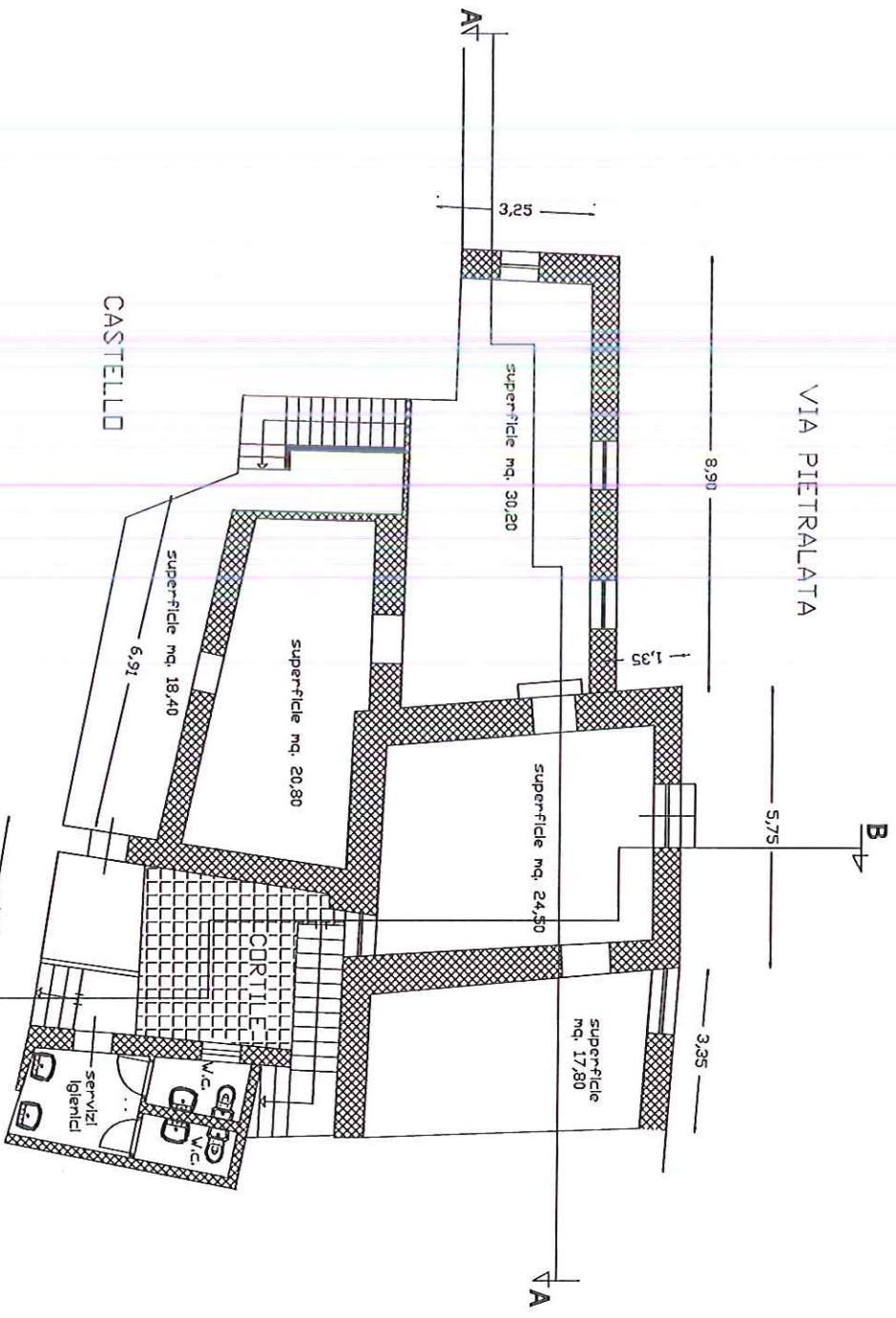
PIANO PRIMO

B



IMMOBILE COMUNALE N° 5

VIA PIETRALATA



PIANO SECONDO